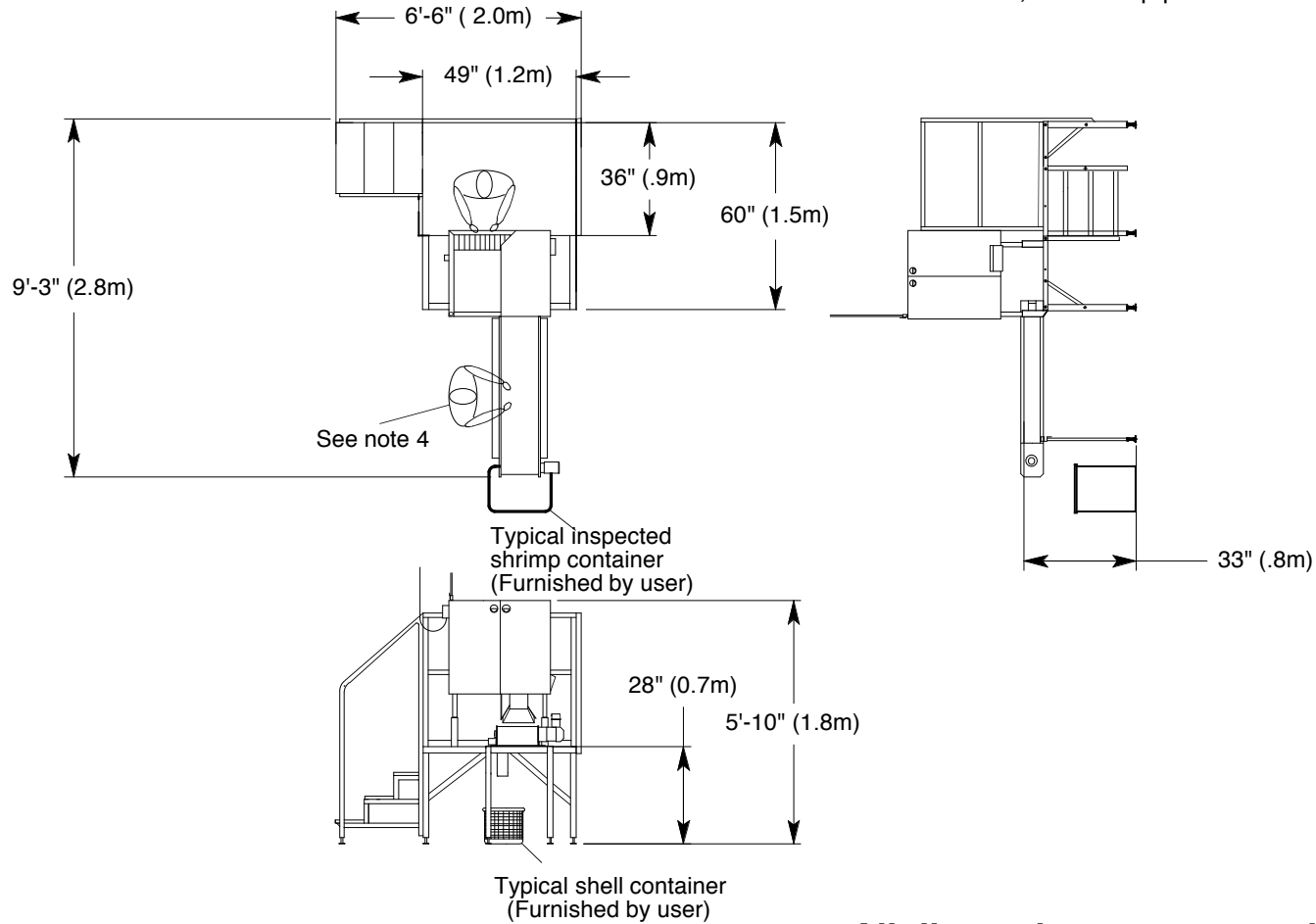



**Single Station  
Jonsson Shrimp Peeling System  
water conservation design**

Peeling capacity: model 60 4,000 shrimp per hour at the slower speed  
5,000 shrimp per hour at the faster speed  
  
model 64 5,000 shrimp per hour at the slower speed  
6,000 shrimp per hour at the faster speed



**All dimensions are approximate**

**NOTES:**

1. Modular peeling line can be assembled with stairway located on either end.
2. Minimum recommended ceiling height 10' (3 meters).
3. Water consumption: 0.8 gpm @ 30 psi to 1.1 gpm @ 50psi (3.0 lpm @ 2 bar to 3.6 lpm @ 3 bar).
4.  Symbols show typical personnel required.

Tolerances (except as noted)		Rev	ECO / BY	Date	<b>GREGOR JONSSON INC.</b>			
Linear:	.xxx = ±.015 .xxxx = ±.005				Name .Shrimp peeling system 15151v4			
Angular:	±1.0°				Date .5/16/06	Drawn By:jep	Scale .1:60	Ck'd By:.
					Experimental No. .	Project No.	DWG No. .15151v4	